

Moon Phases

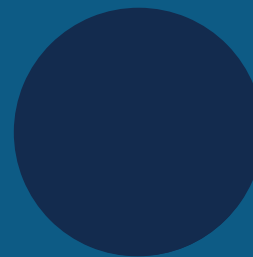
Moon is seen to "change its shape" due to the moon's orbit around the earth. When the moon is between the sun and the earth, sunlight is unable to reflect off its surface, and it is dark (even though it is still there!).

When the moon is on the far side of earth, away from the sun, the sunlight hits the moon fully, illuminating it in the night sky, thus reflecting a full moon!

Sun 太阳



New Moon
新月



Waxing Crescent
蛾眉月



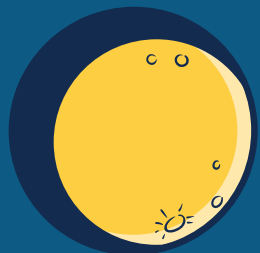
First Quarter
上弦月



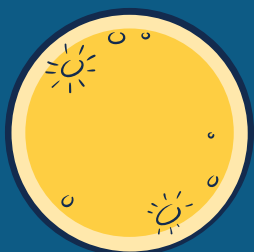
Earth 地球



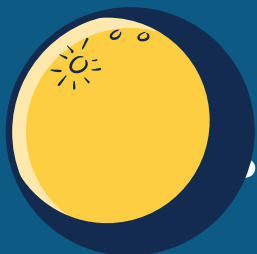
Waxing Gibbous
盈凸月



Full Moon
满月



Waning Gibbous
亏凸月

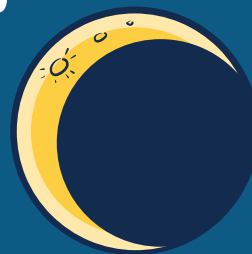


月相

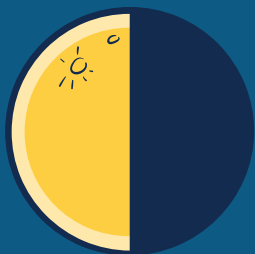
月亮的形状似乎每晚都在变。其实，这是由于月亮绕着地球转动。当月亮移动到太阳与地球之间，我们无法看到阳光照射在月亮上的光，因此看成一片黑（其实月亮一直都在）。

反之，当月亮在地球的另一端，这时我们能看到被阳光照射着的整个月亮，这就是满月。

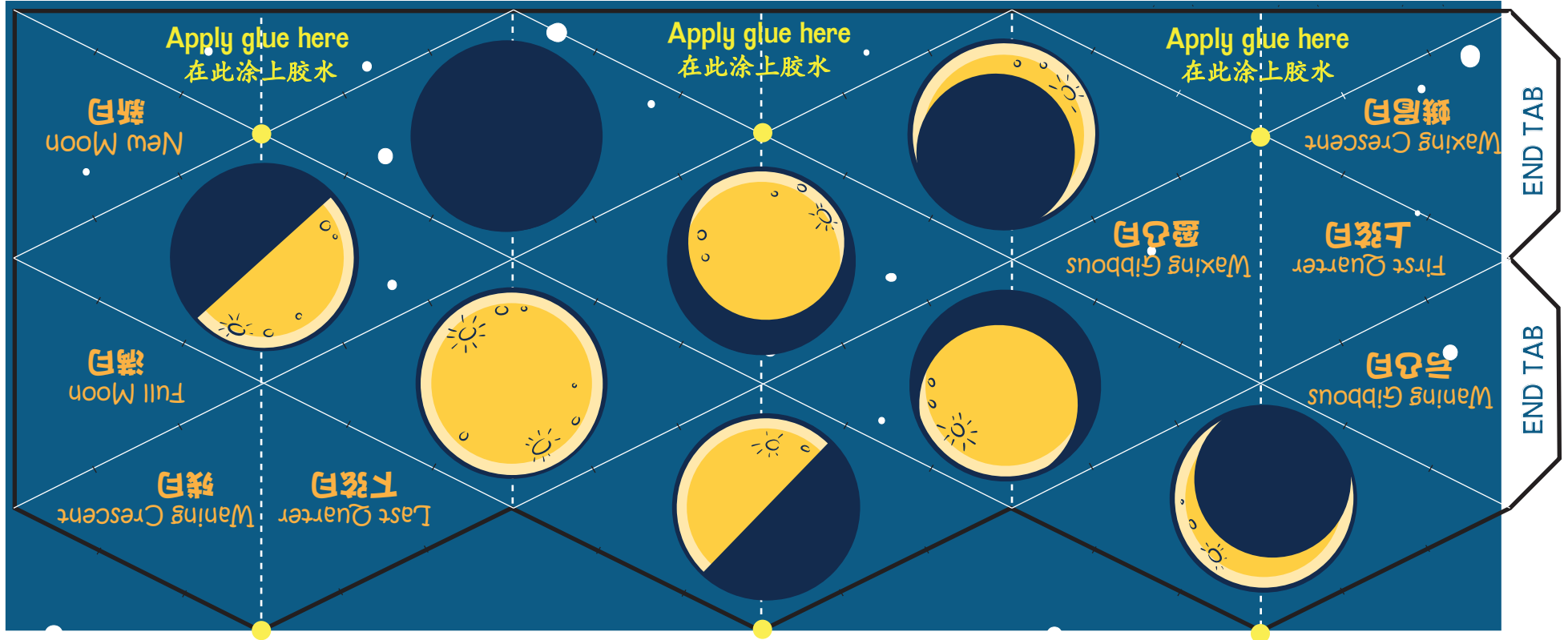
Waning Crescent
残月



Last Quarter
下弦月



Moon Phases Flextangle 月相万花筒折纸



Instructions

1. Print moon phases flextangle on A4 paper or cardstock for better sturdiness.
2. Cut along black bold lines.
3. Fold along white dotted lines **face to face**. Unfold.
4. Fold along white diagonal lines **back to back**. Unfold.
5. Gently fold paper to match yellow dot to yellow dot and form a tube.
6. Apply glue on "Apply glue here" triangle tabs and press together. If fail to glue together, use cellophane tape.
7. Apply glue on end tabs and tuck into open end of tube. Press to seal.

做法

1. 将月相万花筒折纸图像打印在A4纸或硬卡上（效果更坚固）。
2. 沿着黑色粗线切割/剪裁。
3. 沿着白色虚线**面对面**对折，折出折痕。打开。
4. 沿着白色斜线**背对背**对折，折出折痕。打开。
5. 折叠月相折纸，让黄点配对黄点，形成一个管子。
6. 在标有“在此涂上胶水”三角形上涂胶水按在一起，将之黏贴起来。若胶水不黏，可使用胶纸。
7. 在尾部涂上胶水并塞入管子的开口端。按下密封。